

WALL 11

LVH44 FITTED INTO RIGID WALL CONSTRUCTION

DESCRIPTION

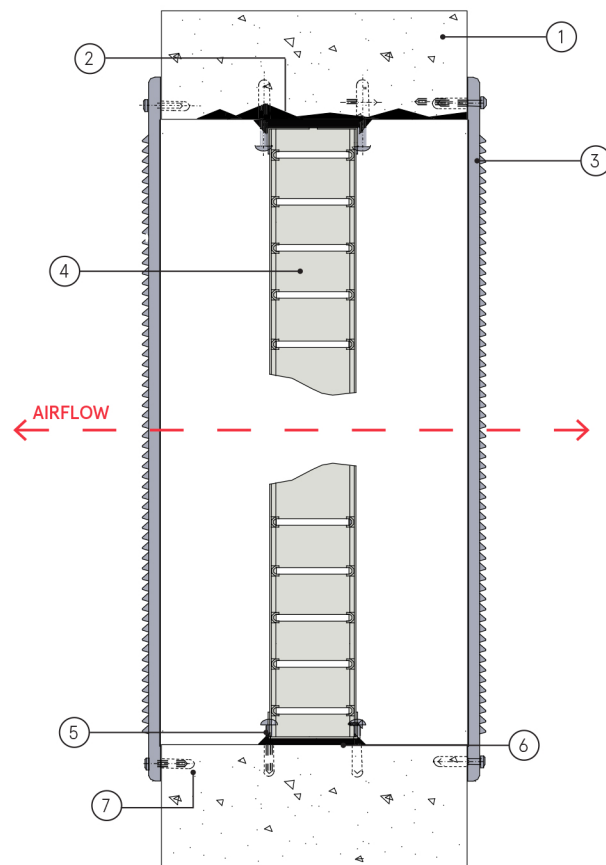
- 1 Rigid wall construction
- 2 Mortar facing over irregular surface
- 3 Pressed steel cover grille
- 4 LVH44 air transfer grille
- 5 Air transfer grille fixing screws into wall plugs
- 6 Use Lorient intumescent sealant to bed air transfer grille into the wall
- 7 Cover grille fixing screws into wall plugs.

CONTENTS

- LVH44 air transfer grille
- Cover grille (optional)

TOOLS REQUIRED

- 4 x 50mm screws
- Wall plugs for 4 x 50mm screws
- Lorient intumescent sealant



LVH44 fitted into masonry, brick or block walls

EI90 / EI120

Fire Resistance in accordance with

BS EN 1364-5:2017

Approval Ref

19/19894-253

Max single cell size

1000mm x 500mm

LVH44 air transfer grilles are supplied 2mm less than the nominal size e.g. a 300mm x 300mm is actually 298mm x 298mm.

INSTALLATION INSTRUCTIONS

- ▶ Cut the aperture to the required size with a maximum gap all around of 5mm. If resulting aperture is out of square, irregular or oversized, make good with mortar.
- ▶ Trial fit the LVH44 into the aperture and ensure that it can be positioned within the section of the wall but not necessarily in the mid position, without jamming or twisting.
- ▶ Mark the position of drill points into wall either side of the LVH44.
- ▶ Remove the LVH44 from the wall aperture.
- ▶ Drill the wall for a minimum of 4 number wall plugs for each face of the LVH44 and fit plugs.
- ▶ Fit retaining screws to plugs to one LVH44 face position.
- ▶ Apply intumescent sealant to aperture faces and position LVH44 up to the first screws.
- ▶ Bed in sealant around LVH44. Clean off surplus and ensure outer edge of air transfer grille is fully sealed.
- ▶ Secure LVH44 with second set of screws.
- ▶ **Note: Fixings supplied by others.**