

# WALL 7

## LVH44 FACE-FIXED ONTO MASONRY WALL WITH ANGLE FIXINGS

### DESCRIPTION

- 1 Masonry wall
  - 2 Lorient intumescent sealant between air transfer grille and masonry wall
  - 3 Lorient LVH44 intumescent air transfer grille to one side only (either side of the wall is acceptable)
  - 4 **Fixing angle:** 40 x 40 x 1mm thick minimum galvanised steel angles fixed to LVH44 unit with self tapping screws and to wall with masonry anchors
- Fixing option 1:** 20mm wide angles, central to all four sides or at 200mm maximum centres
- Fixing option 2:** Full width angles top and bottom only with 200mm fixing centres.

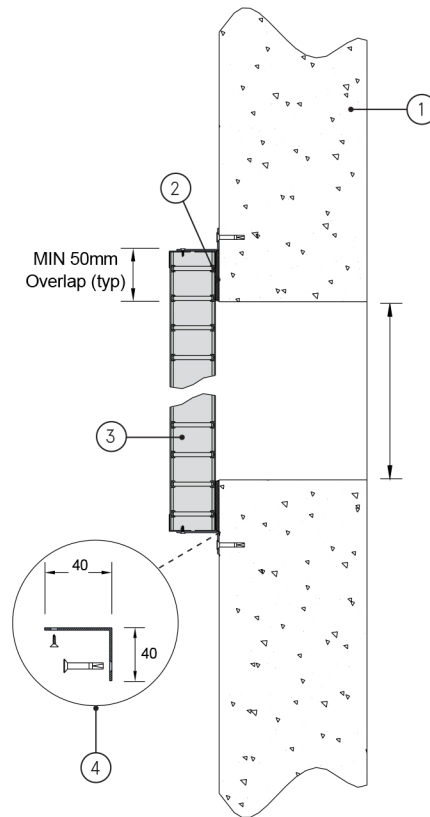
### CONTENTS

- LVH44 air transfer grille
- Cover grille (optional)

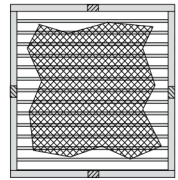
### TOOLS REQUIRED

- Steel angles
- Self tapping screws (3.5 x 16mm)
- Masonry anchors
- Lorient intumescent sealant

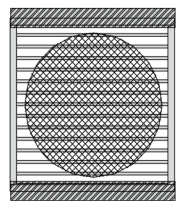
**Note:** Maximum size for surface method 600mm x 600mm



### FIXING OPTION 1



### FIXING OPTION 2



### LVH44 for masonry wall face fixed and angle fixings

#### FR120

#### Fire Resistance in accordance with

BS 476-22:1987

#### Approval Ref

WFRC 121316 (AW7)

#### Max size for surface mounted method

600mm x 600mm

LVH44 air transfer grilles are supplied 2mm less than the nominal size e.g. a 300mm x 300mm is actually 298mm x 298mm.

### INSTALLATION INSTRUCTIONS

- ▶ Measure penetration ensuring air transfer grille is 50mm larger than penetration in masonry wall.
- ▶ Fix the mounting angles onto the LVH44 air transfer grille using self tapping screws.
- ▶ Mount air transfer grille onto masonry wall opening.
- ▶ Fix the angles to the masonry wall with masonry anchors.
- ▶ Apply a bead of Lorient intumescent sealant around the perimeter of air transfer grille between the LVH44 and the wall (note: maximum clearance of 25mm applies).
- ▶ Connect ductwork (or cover grille) directly to wall using approved breakaway connections to ensure compliance.
- ▶ **Note:** Fixings supplied by others.