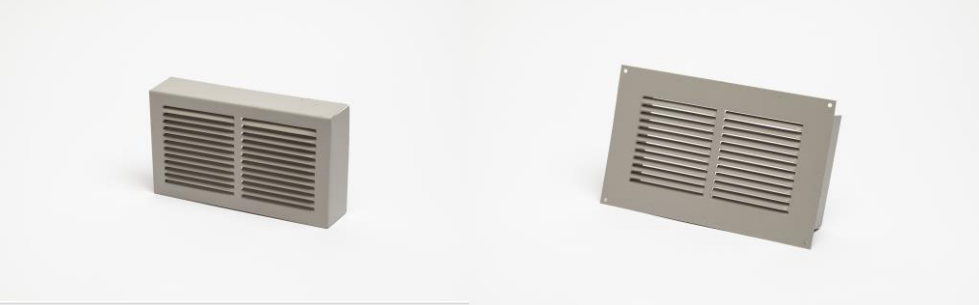
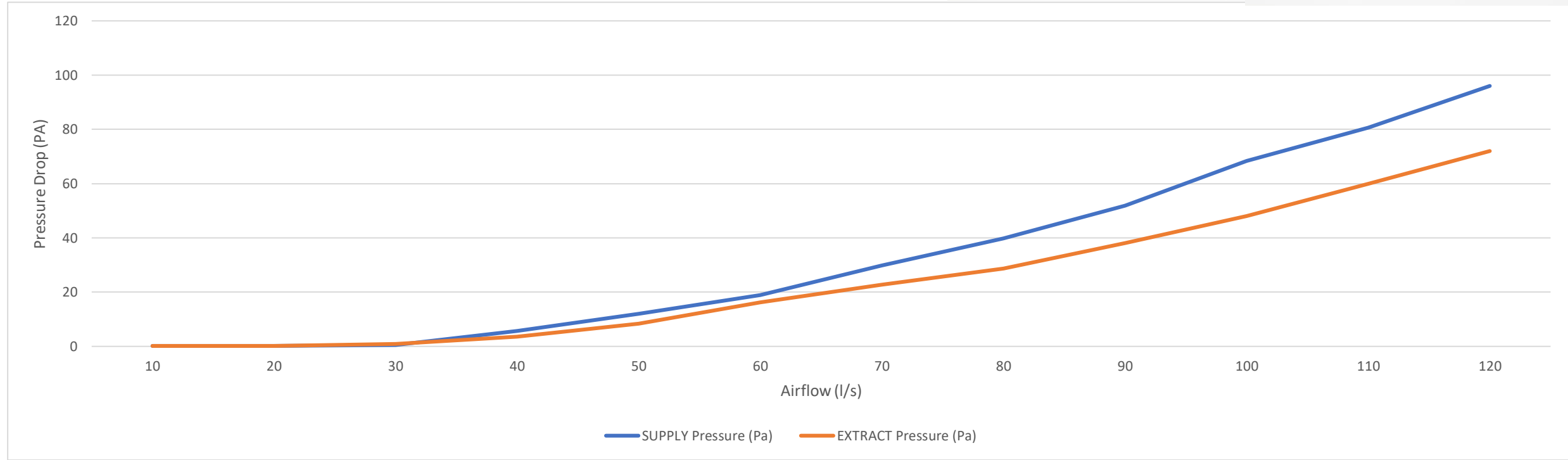


Rytons A1 Fire-rated Return Grille Double Air Brick (Code: A1RGD) & Rytons A1 Fire-rated Return Grille Double Air Brick Flanged (Code: A1RGDF)



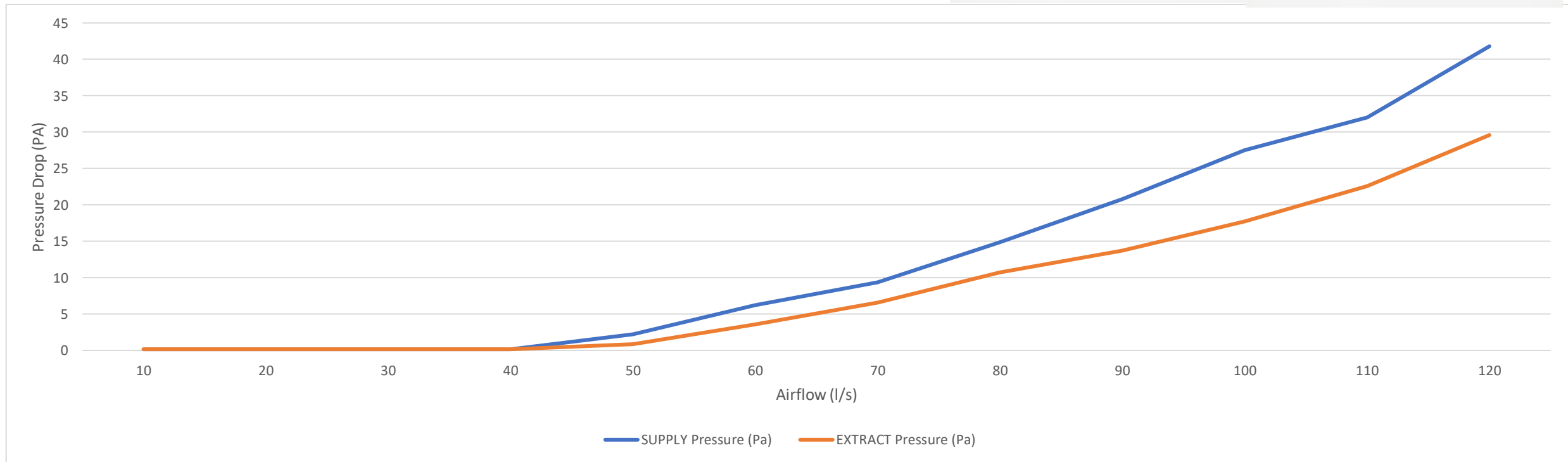
Airflow (l/s)	SUPPLY Pressure (Pa)	EXTRACT Pressure (Pa)
10	0.175	0.168
20	0.175	0.168
30	0.515	0.98
40	5.7	3.6
50	12.1	8.4
60	18.9	16.2
70	29.8	22.7
80	39.8	28.6
90	51.8	38
100	68.4	48
110	80.6	60
120	96	72



Rytons A1 Fire-rated Square Holed Double Air Brick (Code: A1SQD) & Rytons A1 Fire-rated Square Holed Double Air Brick Flanged (Code: A1SQDF)



Airflow (l/s)	SUPPLY Pressure (Pa)	EXTRACT Pressure (Pa)
10	0.16	0.16
20	0.16	0.16
30	0.16	0.16
40	0.16	0.16
50	2.2	0.88
60	6.2	3.60
70	9.4	6.60
80	14.9	10.70
90	20.8	13.70
100	27.5	17.70
110	32	22.60
120	41.8	29.60



Rytons A1 Fire-rated FlowRyt® Double Air Brick (Code: A1FRD) & Rytons A1 Fire-rated FlowRyt® Double Air Brick Flanged (Code: A1FRDF)



Airflow (l/s)	SUPPLY Pressure (Pa)	EXTRACT Pressure (Pa)
10	0.16	0.14
20	0.19	0.146
30	0.33	0.146
40	3.18	1.48
50	7.9	4
60	12.35	7.5
70	16.28	9.9
80	28.00	15
90	36.9	21
100	43	25
110	50.9	30
120	58	42

