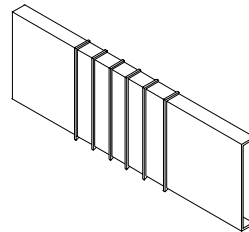
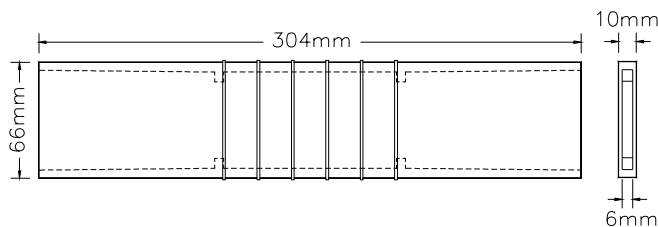


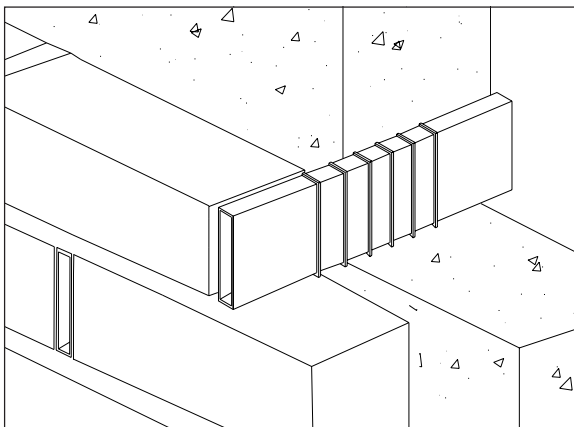
Technical Data Sheet

Rytons Slim Vent® Major

Dimensional Drawing



In-Situ Line Drawing



Main Uses, Features and Benefits

- Extra long cavity ventilator.
- Also cross-cavity and underfloor ventilator.
- Internal and external baffles prevent water transfer.
- No special fixing or brickwork required.



F30 Accessories/Sundry Items for Brick/Block/Stone Walling
Specification Clauses 08, 132, 175

Product Specification Code

Rytons SVM AJ.

Size

304mm (L) x 66mm (H) x 10mm (W).

(Allows 6mm venting gap).

R14 AutoCAD drawing available by e-mail.

Free Area

330mm² per unit.

Composition

High impact polystyrene.

Colours

Clear.

Specification Paragraph

Manufacturer:

Rytons Building Products Ltd Tel: 01536 511874 Fax: 01536 310455

Email: admin@rytons.com Web: www.vents.co.uk (updated regularly)

Product ref: Rytons Slim Vent® Major Clear (ref SVM AJCL to BBA 89/2321)

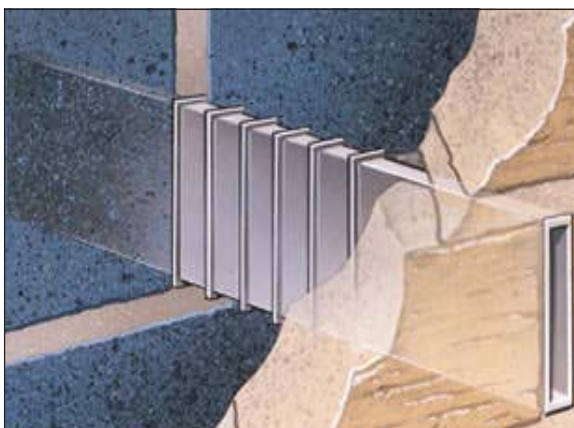
Installation

Installation is fast and easy as work proceeds with the Slim Vent® replacing the vertical mortar joint. Easily cut with a fine tooth saw. **Rytons Slim Vents® are also effective weep holes.**

BBA Approval

Rytons has 73 British Board of Agrément approved products; the largest range on the market. BBA certification is third party evaluation and accreditation, and approved products are accepted by building control officers, architects, engineers and surveyors nationwide. The NHBC also accept products approved by the BBA when used as stated in the relevant BBA certificate. Rytons also has an Irish Building Regulation Statement for each of their three BBA certificates.

In-Situ Drawing



Technical Data Sheet

Rytons Slim Vent® Major

Photo Library



On Site

Open perpend can be uneven and unsightly.



Rytons Slim Vents® give your building an improved appearance and extra 'kerb appeal'.



UK Regulations, Standards and Guidelines

NHBC Standards 2006

6.2 - D4 (c) Ventilation openings should be equivalent to open brick perpend every 1.5m (i.e. 650mm² free air every 1.5m).

The Building (Scotland) Regulations

3.10.6 (2006) Where the outer leaf is a masonry construction, cavities should be vented to the outside air by installing ventilators with at least 300mm² free opening area at 1.2m maximum centres. Precipitation, i.e. rain, snow and sleet, can penetrate the outer leaf of an external wall and cavities are normally drained through weep holes. These weep holes can also provide the necessary venting. **Note: Rytons Slim Vents® are also effective weep holes.**

British Standards

British Standard BS 5250:2002.

Important Note

BBA, NHBC, BSI & Zurich confirm Slim Vents® **DO NOT** require insect screens.

Handling Information

Box quantity: 25 number.

Box size: 32cm (W) x 10.5cm (H) x 29cm (D).

Box weight: 2.5kg.

Be Aware!

The spacing of Rytons Slim Vent® Major is achievable due to its high free air space. Please be aware that most weep/vents do not offer the same high level of ventilation and spacing should be reduced to accommodate the extra vents required.



Please recycle printouts where facilities exist.