

September 2019



Rytons RytDuct® and RytHose Rigid and Flexible Ducting

Interactive guide with links to technical information



Rytons 100mm (110mm x 54mm) RytDuct® & RytHose Range

- For applications requiring lower extraction rates such as bathrooms, WCs and cooker hoods.

- Rigid ducting and components suitable for operating temperatures -15°C to 60°C.

RD4/M - Rytons Flat Channel Duct



- Male component.
- 110mm W x 54mm H overall ext.
- 1m L (Rytons RD41M).
- 2m L (Rytons RD42M).
- Connects to RD4MFAB external air brick.

RD4C - Rytons Flat Channel Connector



- Female component.
- Connects to RD4/M ducting.
- Allows extended ducting.
- Available bagged for display.

RD4CLIP - Rytons Flat Channel Duct Clip



- Female component.
- Support for RD4/M ducting.
- Screw to floor/slab joist.
- Available bagged for display.

RD4V90 - Rytons 90° Vertical Bend



- Female component.
- Connects to RD4/M ducting.
- Allows a 90° vertical change of direction.
- Available bagged for display.

RD4H90 - Rytons 90° Horizontal Bend



- Female component.
- Connects to RD4/M ducting.
- Allows a 90° horizontal change of direction.
- Available bagged for display.

RD4TFLAT - Rytons Flat Channel T Piece



- Female component.
- Connects to RD4/M ducting.
- Allows for a 90° vertical and/or horizontal change of direction.

RD4EB - Rytons 90° Elbow Bend



- Female component with male spigot.
- Connects rectangular RD4/M to circular RD4/RND with a 90° bend.
- Available bagged for display.

RD4EC - Rytons 90° Elbow Connector



- Female component with female collar.
- Connects rectangular RD4/M to RytHose via RD4HCM with a 90° bend.
- Available bagged for display.

RD4FR - Rytons Flat Channel Horizontal Adaptor



- Female component with female collar.
- Connects to RD4/M ducting.
- Use RD4CONN to connect to RD4/RND.
- Available bagged for display.

RD4SFR - Rytons Short Round to Rectangular Adaptor (Male)



- Male component with male spigot.
- Connects RD4/M to RD4/RND.
- Use RD4HCF to attach RytHose.
- Available bagged for display.

Rytons 100mm (110mm x 54mm) RytDuct® & RytHose Range

- For applications requiring lower extraction rates such as bathrooms, WCs and cooker hoods.

- Rigid ducting and components suitable for operating temperatures -15°C to 60°C.

RD4/RND - Rytons Rigid Pipe



- Female component.
- 350mm L (Rytons RD435RND).
- 1m L (Rytons RD41RND).
- 1.5m L (Rytons RD415RND).
- 2m L (Rytons RD42RND).

RD4CONN - Rytons Pipe/Hose Connector



- Male component.
- Connects to RD4/RND ducting.
- Allows extended ducting.
- Available bagged for display.

RD4CDAMP - Rytons Pipe/Hose Connector with Damper



- Male component.
- Connects to RD4/RND ducting.
- Allows extended ducting with the benefit of an internal damper.
- Available bagged for display.

FD4CLIP - Rytons Round Clip



- Female component.
- Support for RD4/RND ducting.
- Two part clip. Screw top to floor/slab joist. Fit ducting and secure with bottom section.
- Available bagged for display.

JCLP100 - Rytons Jubilee Clip



- Female component.
- Adjustable metal clip.
- Suitable for temperature range -20°C to 120°C.

RD4PC - Rytons 90° Elbow Pipe Connector



- Male component.
- Connects to RD4/RND ducting and RytHose range.
- Allows a 90° change of direction.

RD445PC - Rytons 45° Elbow Pipe Connector



- Male component.
- Connects to RD4/RND ducting and RytHose range.
- Allows a 45° change of direction.

RD4TRND - Rytons 3 Way T Piece



- Male component.
- Connects to RD4/RND ducting.
- Available bagged for display.
- Allows for a 90° vertical and/or horizontal change of direction.

RD4TRAP - Rytons Condensation Trap with Overflow



- Female component.
- Use with ducting in cold spaces.
- Collects moisture for draining.
- Connects to RD4/RND ducting and RytHose range.
- Available bagged for display.

RD4REDUC - Rytons 125mm to 100mm Reducer



- 100mm male spigot with 125mm female collar.
- Connects to RD4/RND ducting.
- Compatible with RD51RND.
- Available bagged for display.

Rytons 100mm (110mm x 54mm) RytDuct® & RytHose Range

- For applications requiring lower extraction rates such as bathrooms, WCs and cooker hoods.

- Rigid ducting and components suitable for operating temperatures -15°C to 60°C.

RD46REDUC - Rytons 150mm to 100mm Reducer



- 100mm male spigot with 150mm female collar.
- Connects to RD4/RND ducting.
- Use RD6CONN to connect RD636RND ducting.
- Available bagged for display.

RD4HCM - Rytons Threaded Hose Connector (Male)



- Male component with male spigot.
- Connects to RD4/RND ducting.
- Screw thread for RytHose.
- Available bagged for display.

RD4HCF - Rytons Threaded Hose Connector (Female)



- Female component with female spigot.
- Screw thread for RytHose.
- Connects to RD4HCM.
- Available bagged for display.

RD4WP - Rytons Rectangular Wall Plate



- Plate to cover surface damage.
- Accommodates RD4/M ducting.
- 162.5mm L x 162.5mm H with 113mm L x 55.5mm H aperture.
- Available bagged for display.

INTPLATE - Rytons Circular Wall Plate



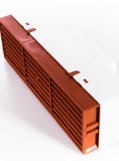
- Plate to cover surface damage.
- Accommodates 100mm ducting.
- 162mm L x 158mm H with 113mm Dia. aperture.
- Available bagged for display.

TAPE33M - Rytons White Sealing Tape



- High quality white sealing tape.
- Use with ducting and connectors.
- Strong adhesive for a long lasting bond.
- 50mm W x 33m L.

RD4MFAB - Rytons Multifix® Air Brick with Flat Channel Ducting Adaptor



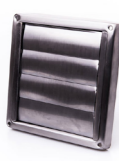
- Multifix® Air Brick with adaptor to suit 110x54mm RD4/M ducting.
- Terracotta, buff/sand, white, blue/black, black, grey, brown.
- U.V. stabilised against sunlight.

RD4GG - Rytons Gravity Grille



- Low profile gravity grille with 99.5mm Dia. male spigot.
- White, brown, terracotta, buff/sand.
- U.V. stabilised against sunlight.
- Available bagged for display.

RD4GGSS - Rytons Stainless Steel Gravity Grille



- Stainless steel gravity grille with 95mm Dia. male spigot.
- Durable and stylish alternative to a plastic grille.

RD4CG - Rytons Cowled Grille



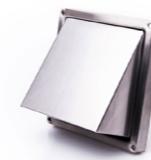
- External cowl with non-return flap and 99.5mm Dia. male spigot.
- White, brown, terracotta, buff/sand.
- U.V. stabilised against sunlight.
- Available bagged for display.

Rytons 100mm (110mm x 54mm) RytDuct® & RytHose Range

- For applications requiring lower extraction rates such as bathrooms, WCs and cooker hoods.

- Rigid ducting and components suitable for operating temperatures -15°C to 60°C.

RD4CGSS - Rytons Stainless Steel Cowled Grille



- Stainless steel cowl with non-return flap and 95mm Dia. male spigot.
- Durable and stylish alternative to a plastic grille.

RD4LGSS - Rytons Stainless Steel Cowled Louvred Grille



- Stainless steel bull-nosed cowled vent with fixed open louvres.
- 95mm Dia. male spigot.
- Durable and stylish alternative to a plastic grille.

RD4MGSS - Rytons Stainless Steel Cowled Meshed Grille



- Stainless steel bull-nosed cowled vent with wire grille.
- 96mm Dia. male spigot.
- Durable and stylish alternative to a plastic grille.

RD4LVGG - Rytons Louvred/Gravity Grille



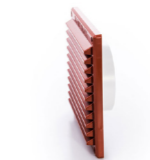
- Louvre grille plus gravity flaps.
- 99mm Dia. male spigot.
- White, brown, terracotta, buff/sand.
- U.V. stabilised against sunlight.
- Supplied bagged for display.

CV60FWBG - Rytons RytAround Ventilator



- White circular louvre grille with removable flyscreen.
- Suits 100mm-150mm Dia. ducting.
- U.V. stabilised against sunlight.
- Supplied bagged for display.

RD4LVBG - Rytons '6x6' Louvre & 97mm Dia. Backplate Set



- Louvre grille with spigot.
- White, terracotta, buff/sand, black, brown grille.
- U.V. stabilised against sunlight.
- Supplied bagged for display.

RD4FLVBG - Rytons '6x6' Louvre with Flyscreen & 97mm Dia. Backplate Set



- Louvre with flyscreen and spigot.
- White, terracotta, buff/sand, black, brown grille.
- U.V. stabilised against sunlight.
- Supplied bagged for display.

FDUCT4/M - Rytons 100mm Diameter PVC RytHose



- Flexible white PVC ducting.
- For low pressure venting.
- Fire-retardant material.
- Temp range: -15°C to 70°C.
- Available in 1m, 2m, 3m, 6m, 15m and 45m lengths.

Tailor-made by Rytons - A Bespoke Ventilation Service

- Plastic air bricks and grilles in custom colours (including RAL and NCS).
- Metal ventilators powder coated in a range of colours and finishes.
- Metal air bricks and adaptors in a range of finishes including Class 0 Flame Retardant paint.
- Specialists in bespoke ventilation for high-rise buildings over 18m high.

Rytons 100mm (110mm x 54mm) RytDuct® & RytHose Range

- For applications requiring lower extraction rates such as bathrooms, WCs and cooker hoods.

- Rigid ducting and components suitable for operating temperatures -15°C to 60°C.

FRD41M - Rytons PVC Rectangular RytHose



- Flexible white PVC ducting.
- 110mm W x 54mm H x 1m L.
- For low pressure venting.
- Fire-retardant material.
- Temp range: -15°C to 70°C.
- Available bagged for display.

FAD410M - Rytons Fire Retardant RytHose



- Flexible aluminium ducting.
- 100mm Dia. x 10m L.
- Fire-retardant material.
- Temp range: -30 to 150°C.
- Air velocity: 30 m/s (max.).

FSRA41.5M - Rytons Semi Rigid Aluminium RytHose



- Semi rigid aluminium ducting.
- 102mm Dia. x 1.5m L.
- Non-combustible material.
- Temp range: -30 to 250°C.
- Air velocity: 30 m/s (max.).

VKIT - Rytons 100mm Venting Kit with '6x6' Louvre Grille (3m)



- Multi-purpose kit with louvre grille and 3m L PVC RytHose.
- White, terracotta, buff/sand, black, brown louvre grille.
- U.V. stabilised against sunlight.

VKIT1M - Rytons 100mm Venting Kit with '6x6' Louvre Grille (1m)



- Multi-purpose kit with louvre grille and 1m L PVC RytHose.
- White, terracotta, buff/sand, black, brown louvre grille.
- U.V. stabilised against sunlight.

VKITGG - Rytons 100mm Venting Kit with Gravity Grille (3m)



- Multi-purpose kit with gravity grille and 3m L PVC RytHose.
- White, brown, terracotta, buff/sand gravity grille.
- U.V. stabilised against sunlight.

VKIT1MGG - Rytons 100mm Venting Kit with Gravity Grille (1m)



- Multi-purpose kit with gravity grille and 1m L PVC RytHose.
- White, brown, terracotta, buff/sand gravity grille.
- U.V. stabilised against sunlight.

VKITCG - Rytons 100mm Venting Kit with Cowled Grille (3m)



- Multi-purpose kit with cowled grille and 3m L PVC RytHose.
- White, brown, terracotta, buff/sand cowled grille.
- U.V. stabilised against sunlight.

Bespoke venting kits are available to order with any combination of ducting and external grille from our range.

Rytons 125mm (204mm x 60mm) RytDuct® & RytHose Range

- Suitable duct size for use with extract and Mechanical Heat Recovery systems.

- Rigid ducting and components suitable for operating temperatures -15°C to 60°C.

RD51M - Rytons Flat Channel Duct



- Male component.
- 204mm W x 60mm H overall ext. x 1m L.
- Connects to Multifix® Air Brick RD5MFAB and double air brick adaptor RD51MFAB2.

RD5C - Rytons Flat Channel Connector



- Female component.
- Connects to RD51M ducting.
- Allows extended ducting.
- Available bagged for display.

RD5CLIP - Rytons Flat Channel Duct Clip



- Female component.
- Support for RD51M ducting.
- Screw to floor/slab joist.
- Available bagged for display.

RD5V90 - Rytons 90° Vertical Bend



- Female component.
- Connects to RD51M ducting.
- Allows a 90° vertical change of direction.
- Available bagged for display.

RD5H90 - Rytons 90° Horizontal Bend



- Female component.
- Connects to RD51M ducting.
- Allows a 90° horizontal change of direction.

RD5H45 - Rytons 45° Horizontal Bend



- Female component.
- Connects to RD51M ducting.
- Allows a 45° horizontal change of direction.

RD5EB - Rytons 90° Rotating Elbow Bend



- Female component with male spigot.
- Connects rectangular RD51M to circular RD51RND.
- Circular spigot rotates to aid positioning of ducting.

RD5FR - Rytons Flat Channel Horizontal Adaptor



- Female component with female collar.
- Connects to RD51M ducting.
- Use RD5CONN to connect to RD51RND.

RD51RND - Rytons Rigid Pipe



- Female component.
- 125mm Internal Dia. x 128mm External Dia. x 1m L.

RD5CONN - Rytons Pipe/Hose Connector



- Male component.
- Connects to RD51RND ducting.
- Allows extended ducting.
- Available bagged for display.

Rytons 125mm (204mm x 60mm) RytDuct® & RytHose Range

- Suitable duct size for use with extract and Mechanical Heat Recovery systems.

- Rigid ducting and components suitable for operating temperatures -15°C to 60°C.

FD5CLIP - Rytons Round Clip



- Female component.
- Support for RD51RND ducting.
- Two part clip. Screw top to floor/slab joist. Fit ducting and secure with bottom section.
- Available bagged for display.

JCLP125 - Rytons Jubilee Clip



- Female component.
- Adjustable metal clip.
- Suitable for temperature range -20°C to 120°C.

RD5PC - Rytons 90° Elbow Pipe Connector



- Male component.
- Connects to RD51RND ducting and RytHose range.
- Allows a 90° change of direction.

RD545PC - Rytons 45° Elbow Pipe Connector



- Male component.
- Connects to RD51RND ducting and RytHose range.
- Allows a 45° change of direction.

RD5TRND - Rytons 3 Way T Piece



- Male component.
- Connects to RD51RND ducting.
- Allows a 90° vertical and/or horizontal change of direction.
- Available bagged for display.

RD4REDUC - Rytons 125mm to 100mm Reducer



- 100mm male spigot with 125mm female collar.
- Connects to RD4/RND ducting.
- Compatible with RD51RND.
- Available bagged for display.

RD5REDUC - Rytons 150mm to 125mm Reducer



- 125mm male spigot with 150mm female collar.
- Connects to RD51RND ducting.
- Use RD6CONN to connect RD636RND ducting.
- Available bagged for display.

RD5HC - Rytons Threaded Hose Connector (Female)



- Female component with female spigot.
- Use RD5CONN to connect RD51RND ducting.
- Screw thread for RytHose.
- Available bagged for display.

RD5WPR - Rytons Rectangular Wall Plate



- Plate to cover surface damage.
- Accommodates RD51M ducting.
- 264mm L x 121mm H with 205mm L x 62mm H aperture.
- Available bagged for display.

SA5PLATE - Rytons Self-adhesive Wall Plate



- Plate to cover surface damage.
- Convenient self-stick backing.
- Accommodates 125mm ducting.
- 197mm L x 197mm H with 128mm Dia. aperture.

Rytons 125mm (204mm x 60mm) RytDuct® & RytHose Range

- Suitable duct size for use with extract and Mechanical Heat Recovery systems.

- Rigid ducting and components suitable for operating temperatures -15°C to 60°C.

TAPE33M - Rytons White Sealing Tape



- High quality white sealing tape.
- Use with ducting and connectors.
- Strong adhesive for a long lasting bond.
- 50mm W x 33m L.

RD5MFAB - Rytons Multifix® Air Brick with Flat Channel Ducting Adaptor



- Multifix® Air Brick with adaptor to suit 204x60mm RD51M ducting.
- Terracotta, buff/sand, white, blue/black, black, grey, brown.
- U.V. stabilised against sunlight.

RD51MFAB2 - Rytons Double Air Brick Adaptor



- Female component.
- Adaptor to connect Rytons '9x6' Multifix Air Brick to 204x60mm ducting.

RD5GG - Rytons Gravity Grille



- Gravity grille with 125mm Dia. male spigot.
- White, brown, terracotta, buff/sand.
- U.V. stabilised against sunlight.
- Available bagged for display.

RD5CG - Rytons Cowled Grille



- External cowl with non-return flap and 125mm Dia. male spigot.
- White, brown, terracotta, buff/sand.
- U.V. stabilised against sunlight.
- Available bagged for display.

RD5LGSS - Rytons Stainless Steel Cowled Louvred Grille



- Stainless steel bull-nosed cowled vent with fixed open louvres.
- 120mm Dia. male spigot.
- Durable and stylish alternative to a plastic grille.

RD5MGSS - Rytons Stainless Steel Cowled Meshed Grille



- Stainless steel bull-nosed cowled vent with wire grille.
- 120mm Dia. male spigot.
- Durable and stylish alternative to a plastic grille.

CV60FWBG - Rytons RytAround Ventilator



- White circular louvre grille with removable flyscreen.
- Suits 100mm-150mm Dia. ducting.
- U.V. stabilised against sunlight.
- Supplied bagged for display.

Tailor-made by Rytons - A Bespoke Ventilation Service

- Plastic air bricks and grilles in custom colours (including RAL and NCS).
- Metal ventilators powder coated in a range of colours and finishes.
- Metal air bricks and adaptors in a range of finishes including Class 0 Flame Retardant paint.
- Specialists in bespoke ventilation for high-rise buildings over 18m high.

Rytons 125mm (204mm x 60mm) RytDuct® & RytHose Range

- Suitable duct size for use with extract and Mechanical Heat Recovery systems.

- Rigid ducting and components suitable for operating temperatures -15°C to 60°C.

RD5LVBG - Rytons '6x6' Louvre & 122mm Dia. Backplate Set



- Louvre grille with spigot.
- White, terracotta, buff/sand, black, brown grille.
- U.V. stabilised against sunlight.
- Supplied bagged for display.

RD5FLVBG - Rytons '6x6' Louvre with Flyscreen & 122mm Dia. Backplate Set



- Louvre with flyscreen and spigot.
- White, terracotta, buff/sand, black, brown grille.
- U.V. stabilised against sunlight.
- Supplied bagged for display.

FDUCT5/M - Rytons 125mm Diameter PVC RytHose



- Flexible white PVC ducting.
- For low pressure venting.
- Fire-retardant material.
- Temp range: -15°C to 60°C.
- Available in 3m and 6m lengths.

FRD51M - Rytons PVC Rectangular RytHose



- Flexible white PVC ducting.
- 204mm W x 60mm H x 1m L.
- For low pressure venting.
- Fire-retardant material.
- Temp range: -15°C to 70°C.

FAD510M - Rytons Fire Retardant RytHose



- Flexible aluminium ducting.
- 125mm Dia. x 10m L.
- Fire-retardant material.
- Temp range: -30 to 150°C.
- Air velocity: 30 m/s (max.).

FSRA51.5M - Rytons Semi Rigid Aluminium RytHose



- Semi rigid aluminium ducting.
- 127mm Dia. x 1.5m L.
- Non-combustible material.
- Temp range: -30 to 250°C.
- Air velocity: 30 m/s (max.).

VKIT5 - Rytons 125mm Venting Kit with '6x6' Louvre Grille (3m)



- Multi-purpose kit with louvre grille and 3m L PVC RytHose.
- White, terracotta, buff/sand, black, brown louvre grille.
- U.V. stabilised against sunlight.

VKIT5GG - Rytons 125mm Venting Kit with Gravity Grille (3m)



- Multi-purpose kit with gravity grille and 3m L PVC RytHose.
- White, brown, terracotta, buff/sand gravity grille.
- U.V. stabilised against sunlight.

Bespoke venting kits are available to order with any combination of ducting and external grille from our range.

Rytons 150mm (220mm x 90mm) RytDuct® & RytHose Range

- Suitable duct size for use with extract and Mechanical Heat Recovery systems.

- Rigid ducting and components suitable for operating temperatures -15°C to 60°C.

RD61M - Rytons Flat Channel Duct



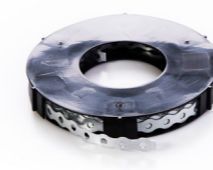
- Male component.
- 220mm W x 90mm H overall ext. x 1m L.
- Connects to double air brick adaptor RD61MFAB2.

RD6C - Rytons Flat Channel Connector



- Female component.
- Connects to RD61M ducting.
- Allows extended ducting.

BANDGALV - Rytons Galvanised Banding



- Galvanised strapping for ducting.
- 12mm W x 10m L.
- Easily cut and bent into shape.
- Temp range: -20°C to 120°C.

RD6V90 - Rytons 90° Vertical Bend



- Female component.
- Connects to RD61M ducting.
- Allows a 90° vertical change of direction.
- Available bagged for display.

RD6EB - Rytons 90° Elbow Bend



- Female component with male spigot.
- Connects rectangular RD61M to circular RD636RND with a 90° bend.

RD6H90 - Rytons 90° Horizontal Bend



- Female component.
- Connects to RD61M ducting.
- Allows a 90° horizontal change of direction.

RD6FR - Rytons Flat Channel Horizontal Adaptor



- Female component with male spigot.
- Connects rectangular RD61M to circular RD636RND ducting.

RD636RND - Rytons Rigid Pipe



- Female component.
- 150mm Internal Dia. x 154mm External Dia. x 350mm L.

RD6CONN - Rytons Pipe/Hose Connector



- Male component.
- Connects to RD636RND ducting.
- Allows extended ducting.
- Available bagged for display.

FD6CLIP - Rytons Round Clip



- Female component.
- Support for RD636RND ducting.
- Two part clip. Screw top to floor/slab joist. Fit ducting and secure with bottom section.
- Available bagged for display.

Rytons 150mm (220mm x 90mm) RytDuct® & RytHose Range

- Suitable duct size for use with extract and Mechanical Heat Recovery systems.

- Rigid ducting and components suitable for operating temperatures -15°C to 60°C.

JCLP150 - Rytons Jubilee Clip



- Female component.
- Adjustable metal clip.
- Suitable for temperature range -20°C to 120°C.

RD6PC - Rytons 90° Elbow Pipe Connector



- Male component.
- Connects to RD636RND ducting and RytHose range.
- Allows a 90° change of direction.

RD6TRND - Rytons 3 Way T Piece



- Male component.
- Connects to RD636RND ducting.
- Allows a 90° vertical and/or horizontal change of direction.

RD46REDUC - Rytons 150mm to 100mm Reducer



- 100mm male spigot with 150mm female collar.
- Connects to RD4/RND ducting.
- Use RD6CONN to connect RD636RND ducting.
- Available bagged for display.

RD5REDUC - Rytons 150mm to 125mm Reducer



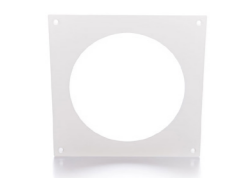
- 125mm male spigot with 150mm female collar.
- Connects to RD51RND ducting.
- Use RD6CONN to connect RD636RND ducting.
- Available bagged for display.

RD6HC - Rytons Threaded Hose Connector (Female)



- Female component with female spigot.
- Use RD6CONN to connect RD636RND ducting.
- Screw thread for RytHose.
- Available bagged for display.

RD6WPC - Rytons Circular Wall Plate



- Plate to cover surface damage.
- Accommodates 150mm ducting.
- 205mm L x 205mm H with 157mm Dia. aperture.
- Available bagged for display.

TAPE33M - Rytons White Sealing Tape



- High quality white sealing tape.
- Use with ducting and connectors.
- Strong adhesive for a long lasting bond.
- 50mm W x 33m L.

RD61MFAB2 - Rytons Double Air Brick Adaptor



- Female component.
- Adaptor to connect Rytons '9x6' Multifix Air Brick to 220x90mm ducting.

RD6GG - Rytons Gravity Grille



- Gravity grille with 150mm Dia. male spigot.
- White, brown, terracotta, buff/sand.
- Available bagged for display.

Rytons 150mm (220mm x 90mm) RytDuct® & RytHose Range

- Suitable duct size for use with extract and Mechanical Heat Recovery systems.

- Rigid ducting and components suitable for operating temperatures -15°C to 60°C.

RD6LGSS - Rytons Stainless Steel Cowled Louvred Grille



- Stainless steel bull-nosed cowled vent with fixed open louvres.
- 145mm Dia. male spigot.
- Durable and stylish alternative to a plastic grille.

RD6MGSS - Rytons Stainless Steel Cowled Meshed Grille



- Stainless steel bull-nosed cowled vent with wire grille.
- 145mm Dia. male spigot.
- Durable and stylish alternative to a plastic grille.

CV60FWBG - Rytons RytAround Ventilator



- White circular louvre grille with removable flyscreen.
- Suits 100mm-150mm Dia. ducting.
- U.V. stabilised against sunlight.
- Supplied bagged for display.

RD6LVBG - Rytons '6x6' Louvre & 150mm Dia. Backplate Set



- Louvre grille with spigot.
- White, terracotta, buff/sand, black, brown grille.
- U.V. stabilised against sunlight.
- Supplied bagged for display.

RD6FLVBG - Rytons '6x6' Louvre with Flyscreen & 150mm Dia. Backplate Set



- Louvre with flyscreen and spigot.
- White, terracotta, buff/sand, black, brown grille.
- U.V. stabilised against sunlight.
- Supplied bagged for display.

FDUCT6/M - Rytons 150mm Diameter PVC RytHose



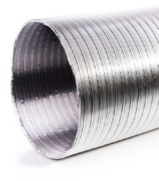
- Flexible white PVC ducting.
- For low pressure venting.
- Fire-retardant material.
- Temp range: -15°C to 70°C.
- Available in 3m, 6m and 15m lengths.

FAD610M - Rytons Fire Retardant RytHose



- Flexible aluminium ducting.
- 150mm Dia. x 10m L.
- Fire-retardant material.
- Temp range: -30 to 150°C.
- Air velocity: 30 m/s (max.).

FSRA61.5M - Rytons Semi Rigid Aluminium RytHose



- Semi rigid aluminium ducting.
- 152mm Dia. x 1.5m L.
- Non-combustible material.
- Temp range: -30 to 250°C.
- Air velocity: 30 m/s (max.).

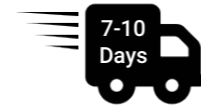
Tailor-made by Rytons - A Bespoke Ventilation Service

- Plastic air bricks and grilles in custom colours (including RAL and NCS).
- Metal ventilators powder coated in a range of colours and finishes.
- Metal air bricks and adaptors in a range of finishes including Class 0 Flame Retardant paint.
- Specialists in bespoke ventilation for high-rise buildings over 18m high.

Special Order Ducting Rytons Thermal Ducting and Connectors

- A superior quality ducting system offering significant thermal resistance and condensation prevention.

- Provides a minimum Thermal Resistance (R value) of 0.666 m²K/W.



Rytons Thermal Flat Channel Ducting



- 204mm W x 60mm H.
- 220mm W x 90mm H.
- 1m L and 2m L.
- One duct-to-duct connector supplied with each length.

Rytons Thermal 90° Horizontal Bend



- 204mm W x 60mm H.
- 220mm W x 90mm H.
- Two click & lock duct connectors supplied with each unit.

Rytons Thermal 45° Horizontal Bend



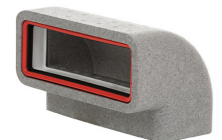
- 204mm W x 60mm H.
- 220mm W x 90mm H.
- Two click & lock duct connectors supplied with each unit.

Rytons Thermal 3 Way Duct T Piece



- 204mm W x 60mm H.
- 220mm W x 90mm H.
- Three click & lock duct connectors supplied with each unit.

Rytons Thermal 90° Vertical Bend



- 204mm W x 60mm H.
- 220mm W x 90mm H.
- Two click & lock duct connectors supplied with each unit.

Rytons Thermal 45° Vertical Bend



- 204mm W x 60mm H.
- 220mm W x 90mm H.
- Two click & lock duct connectors supplied with each unit.

Rytons Thermal Elbow Bend



- 204mm W x 60mm H.
- 220mm W x 90mm H.
- Two click & lock duct connectors supplied with each unit.

Rytons Thermal Duct-to-Duct Connector



- 204mm W x 60mm H.
- 220mm W x 90mm H.
- Male connector allowing sealed thermal duct connections.

Rytons Click & Lock Thermal Duct Connector



- 204mm W x 60mm H.
- 220mm W x 90mm H.
- Allows click & lock connection to bends from thermal ducting.

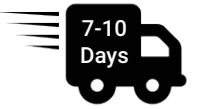
Quick Fit Fittings
No Wrapping - No Taping
No Sealing



Special Order Ducting Rytons Thermal Ducting and Connectors

- A superior quality ducting system offering significant thermal resistance and condensation prevention.

- Provides a minimum Thermal Resistance (R value) of 0.666 m²K/W.



Rytons Thermal Pipe



- 125mm Dia.
- 160mm Dia.
- 1m L and 2m L.
- One pipe-to-pipe connector supplied with each length.

Rytons Thermal 90° Elbow Pipe Connector



- 125mm Dia.
- 160mm Dia.
- Two click & lock pipe connectors supplied with each unit.

Rytons Thermal 45° Elbow Pipe Connector



- 125mm Dia.
- 160mm Dia.
- Two click & lock pipe connectors supplied with each unit.

Rytons Thermal 3 Way Pipe T Piece



- 125mm Dia.
- 160mm Dia.
- Three click & lock pipe connectors supplied with each unit.

Rytons Thermal Condensation Trap



- 125mm Dia.
- 160mm Dia.
- Two duct-to-duct connectors supplied with each unit.

Rytons Thermal Pipe-to-Pipe Connector



- 125mm Dia.
- 160mm Dia.
- Male connector allowing sealed thermal pipe connections.

Rytons Click & Lock Thermal Pipe Connector



- 125mm Dia.
- 160mm Dia.
- Allows click & lock connection to bends from thermal pipe.

Rytons Self-Seal Thermal Adaptor



- 160mm Dia. to 150mm Dia. pipe adaptor.

Quick Fit Fittings
No Wrapping - No Taping
No Sealing



Products & Services

As a UK ventilation manufacturer since 1972, we use all our expertise and experience to bring you outstanding product ranges and a service you can rely on.

To order call **01536 511874** or email admin@rytons.com.

Free delivery is available on orders of just **£75 nett** to any address on the UK mainland (including sites).

Place an order before 3pm for delivery **next working day**. Orders to Northern Ireland and the Republic of Ireland are normally delivered in 2-3 working days.

