

September 2020



Rytons Boiler, Stove & Fire Ventilators

Interactive guide with links to technical information



Contents

Product Name	Product Code	Equivalent Area	Sound Reduction dB D _{n,e,w}	Page
General Guidance				3
Rytons 3" Mini LookRyt® AirCore®	AC3LP	3,168mm²	Unsilenced	4
Rytons 5" LookRyt® AirCore®	AC10LP	10,400mm²	Unsilenced	5
Rytons 5" Cowled LookRyt® AirCore®	AC10LPCWL	11,100mm²	Unsilenced	5
Rytons 5" Baffled LookRyt® AirCore®	AC7LP	7,900mm²	Unsilenced	5
Rytons 5" Cowled Baffled LookRyt® AirCore®	AC7LPCWL	8,100mm²	Unsilenced	5
Rytons 5" Internal Fit LookRyt® AirCore®	ACH75LP	6,800mm²	Unsilenced	5
Rytons 5" Super Acoustic LookRyt® AirCore®	AAC125LP	7,400mm²	44 dB	6
Rytons 5" Cowled Super Acoustic LookRyt® AirCore®	AAC125LPCWL	7,200mm²	45 dB	6
Rytons 5" Internal Fit Super Acoustic LookRyt® AirCore®	AAH125LP	6,600mm²	44 dB	6
Rytons 9x3 Ventilation Set with Flush Louvre	TCL8	9,400mm²	Unsilenced	8
Rytons 9x3 Cowled Ventilation Set with Flush Louvre	TCL8CWL	9,100mm²	Unsilenced	8
Rytons 9x3 Acoustic AirLiner® Set with Flush Louvre	TAL4SET	5,800mm²	38 dB	8
Rytons 9x3 Cowled Acoustic AirLiner® Set with Flush Louvre	TAL4CWL	5,800mm²	39 dB	8
Rytons 9x6 Ventilation Set with Flush Louvre	TCL18	17,500mm²	Unsilenced	9
Rytons 9x6 Cowled Ventilation Set with Flush Louvre	TCL18CWL	17,200mm²	Unsilenced	9
Rytons 9x6 Acoustic AirLiner® Set with Flush Louvre	TALSET	6,300mm²	39 dB	9
Rytons 9x6 Cowled Acoustic AirLiner® Set with Flush Louvre	TALCWL	5,500mm²	42 dB	9
Rytons 9x9 Ventilation Set with Louvre	TCL20	26,500mm²	Unsilenced	10
Rytons 9x9 Cowled Ventilation Set with Louvre	TCL20CWL	24,000mm²	Unsilenced	10
Rytons 9x9 Acoustic AirLiner® Set with Louvre	TAL9SET	13,100mm²	38 dB	10
Rytons 9x9 Cowled Acoustic AirLiner® Set with Louvre	TAL9CWL	12,200mm²	40 dB	10
Rytons Direct Ventilation Kits	Various	N/A	N/A	11
Rytons Floor Ventilators	FV10	* 11,000mm²	N/A	12
Rytons Intumescent RytBlocks	Various	Various	N/A	13
Step by step guide to ventilating gas appliances				14
Step by step guide to ventilating solid fuel appliances				15

* Free Area

General Guidance

A brief definition of some of the terminology used in this guide.

A **combustion appliance** (or **appliance**) is typically a boiler, warm air heater, fire, stove or cooker which burns fuel to generate heat for the home or for cooking purposes. These appliances require adequate ventilation to ensure safe combustion and efficient operation.

A $D_{n,e,w}$ **sound reduction figure** reflects testing at every frequency and it is the only result recommended by the BRE for products such as vents. As there is no industry standard for presenting acoustic test results, beware of unspecified dB figures which can simply be the highest dB achieved at an individual frequency bearing no relation to the type of noise you are aiming to reduce. Only a $D_{n,e,w}$ figure gives you peace of mind that the result reflects the true performance of the product.

Equivalent area is the required air flow calculation measurement for combustion appliance ventilators. This robust measurement should be carried out to the method contained in BS EN 13141-1:2004, usually by an independent testing authority.

A **flue draught stabiliser** is an apparatus fitted within the chimney to reduce negative draughts.

A **flueless appliance** is designed not to be connected to a flue. Its combustion gases mix with the air in the room and are dispersed with air exchange.

Free area is a simple geometric calculation of air flow which is achieved by measuring the smallest apertures of a grille or vent. This method of calculating air flow is deemed unreliable for modern combustion air vents which often have cowls and complex draught reducing systems.

HETAS is the official approval body for solid fuel and biomass appliances. Rytons has an extensive range of ventilators with HETAS approval which are recommended by HETAS to their registered engineers.

An **open-flued appliance** draws its combustion air from the room or space into which it is installed. A flue is required to discharge its products of combustion to the outside.

A **room-sealed appliance** has an air in/fumes out combustion system completely sealed from the room into which it is installed.

No part of this publication may be reproduced or transmitted in any form or by any means, electronic or mechanical, including photocopying, recording or information storage or retrieval system, without either the prior permission in writing from the publisher or a licence, permitting restricted copying.

Architects or similar are permitted to reproduce appropriate illustrations on plans and documents only.

All Rytons products are neither hazardous to health nor harmful to the environment when used correctly. Rytons reserve the right to improve specifications from time to time without prior notice. All information is given in good faith and to the best of our knowledge is true and accurate. Since delivery dates, the use of products and control of the labour involved is outside our control, no warranty is given nor should Rytons representatives or agents imply any warranty. Customers should also satisfy themselves that the products are suitable for the intended purpose.

Calls to and from Rytons are recorded to help us maintain and improve our service.

Rytons products are protected under section 213 of the Copyright, Designs and Patents Act 1988. ® Registered Trademark of Rytons Building Products Ltd. All trademarks and trade names used in this brochure are the property of Rytons Building Products Ltd. Copyright © Rytons Building Products Ltd 2020.

Any communication regarding the above should be directed to Rytons Building Products Ltd, Design House, Kettering Business Park, Kettering, NN15 6NL. Registered in England 1058924.

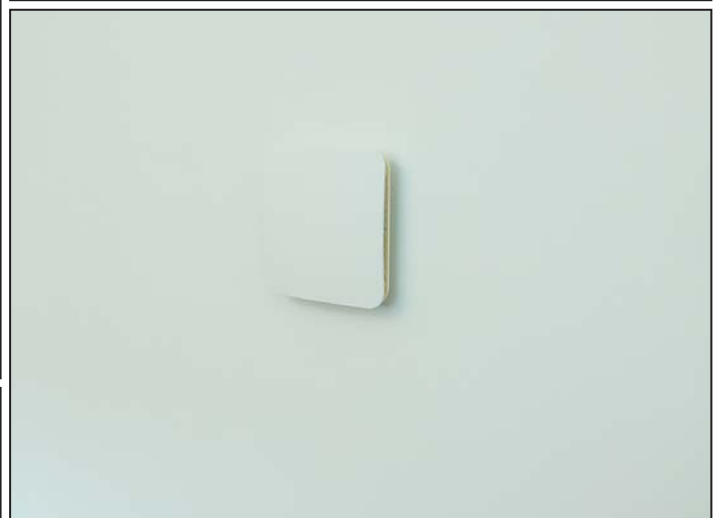
Rytens Mini LookRyt® AirCore®

- Stove ventilation set with mini internal panel barely bigger than a light switch.
- Paint or wallpaper the mini LookRyt panel to match room décor for an appearance that's virtually unnoticeable.

AC3LP - Rytens Mini LookRyt AirCore



- 3" dia. retro-fitted mini combustion air vent.
- 3,168mm² (31.68cm²) equivalent area.
- Terracotta, buff/sand, white external grille.
- HETAS approved.



Paint or wallpaper the internal panel for a discreet appearance.

Rytons Unsilenced LookRyt® AirCore® Range

- All sets include a draught reducing LookRyt panel which disperses air evenly for maximum comfort.
- Paint or wallpaper the LookRyt panel to match room décor for an appearance that's virtually unnoticeable.

AC10LP - Rytons LookRyt AirCore



- 5" dia. retro-fitted combustion air vent.
- 10,400mm² (104cm²) equivalent area.
- Terracotta, buff/sand, white external grille.
- HETAS approved.



AC10LPCWL - Rytons Cowled LookRyt AirCore



- 5" dia. retro-fitted combustion air vent, with external cowl.
- 11,100mm² (111cm²) equivalent area.
- Terracotta, buff/sand, white external cowl/grille.
- HETAS approved.



AC7LP - Rytons Baffled LookRyt AirCore



- 5" dia. retro-fitted combustion air vent, with internal baffles.
- 7,900mm² (79cm²) equivalent area.
- Terracotta, buff/sand, white external grille.
- HETAS approved.



AC7LPCWL - Rytons Cowled Baffled LookRyt AirCore



- 5" dia. retro-fitted combustion air vent, with internal baffles and external cowl.
- 8,100mm² (81cm²) equivalent area.
- Terracotta, buff/sand, white external cowl/grille.
- HETAS approved.



ACH75LP - Rytons Internal Fit LookRyt AirCore



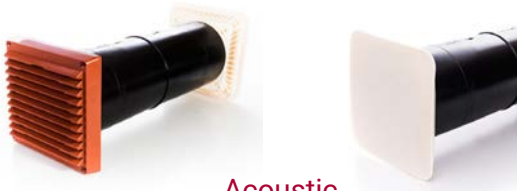
- 5" dia. retro-fitted combustion air vent, fitted from the inside, with internal baffles.
- 6,800mm² (68cm²) equivalent area.
- Terracotta, buff/sand, white external grille.
- HETAS approved.



Rytons Super Acoustic LookRyt® AirCore® Range

- All sets include a draught reducing LookRyt panel which disperses air evenly for maximum comfort.
- Paint or wallpaper the LookRyt panel to match room décor for an appearance that's virtually unnoticeable.

AAC125LP - Rytons Super Acoustic LookRyt AirCore

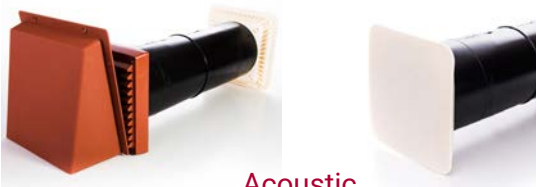


Acoustic

- 5" dia. retro-fitted combustion air vent.
- Reduces sound by 44 dB (Dn,e,w).
- 7,400mm² (74cm²) equivalent area.
- Terracotta, buff/sand, white external grille.
- HETAS approved.



AAC125LPCWL - Rytons Cowled Super Acoustic LookRyt AirCore



Acoustic

- 5" dia. retro-fitted combustion air vent, with external cowl.
- Reduces sound by 45 dB (Dn,e,w).
- 7,200mm² (72cm²) equivalent area.
- Terracotta, buff/sand, white external cowl/grille.
- HETAS approved.



AAH125LP - Rytons Internal Fit Super Acoustic LookRyt AirCore



Acoustic

- 5" dia. retro-fitted combustion air vent, fitted from the inside.
- Reduces sound by 44 dB (Dn,e,w).
- 6,600mm² (66cm²) equivalent area.
- Terracotta, buff/sand, white external grille.
- HETAS approved.



Tailor-made by Rytons

Bespoke ventilation service

- Plastic ventilators in custom colours (including RAL and NCS).
- Metal ventilators powder coated in a range of colours and finishes.
- Metal air bricks and adaptors in a range of finishes including Class 0 Flame Retardant paint.
- Specialists in bespoke ventilation for high-rise buildings over 18m high.
- Complete service from design and tooling to manufacture and supply.

For more information call 00441536 511874

See our tailor-made image gallery
at www.vents.co.uk.



Rytons Ventilation Sets '9x3'

- '9x3' through-wall AirLiner® sets for the provision of combustion air to stoves and fires.
- Telescopic liner extends from 250mm-368mm L including air brick.
- Internal baffle reduces transmission of light and draughts.

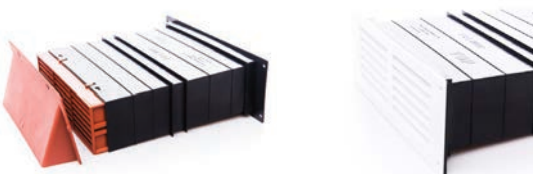
TCL8 - Rytons 9x3 Ventilation Set with Flush Louvre Ventilator



- Ventilation set for the provision of combustion air.
- 9,400mm² (94cm²) equivalent area.
- Terracotta, buff/sand, white, grey, blue/black, black, brown.
- HETAS approved.



TCL8CWL - Rytons 9x3 Cowled Ventilation Set with Flush Louvre Ventilator



- Cowled ventilation set for the provision of combustion air.
- 9,100mm² (91cm²) equivalent area.
- Terracotta, buff/sand.
- HETAS approved.



TAL4SET - Rytons 9x3 Acoustic AirLiner Set with Flush Louvre Ventilator



Acoustic

- Ventilation set for the provision of combustion air.
- Reduces sound by 38 dB (Dn,e,w).
- 5,800mm² (58cm²) equivalent area.
- Terracotta, buff/sand, white, grey, blue/black, black, brown.
- HETAS approved.



TAL4CWL - Rytons 9x3 Cowled Acoustic AirLiner Set with Flush Louvre Ventilator



Acoustic

- Cowled ventilation set for the provision of combustion air.
- Reduces sound by 39 dB (Dn,e,w).
- 5,800mm² (58cm²) equivalent area.
- Terracotta, buff/sand.
- HETAS approved.



Rytons Ventilation Sets '9x6'

- '9x6' through-wall AirLiner® sets for the provision of combustion air to stoves and fires.
- Telescopic liner extends from 250mm-404mm L including air brick.
- Internal baffles reduce transmission of light and draughts.

TCL18 - Rytons 9x6 Ventilation Set with Flush Louvre Ventilator



- Ventilation set for the provision of combustion air.
- 17,500mm² (175cm²) equivalent area.
- Terracotta, buff/sand, white, grey, blue/black, black, brown.
- HETAS approved.



TCL18CWL - Rytons 9x6 Cowled Ventilation Set with Flush Louvre Ventilator



- Cowled ventilation set for the provision of combustion air.
- 17,200mm² (172cm²) equivalent area.
- Terracotta, buff/sand, white.
- HETAS approved.



TALSET - Rytons 9x6 Acoustic AirLiner Set with Flush Louvre Ventilator



Acoustic

- Ventilation set for the provision of combustion air.
- Reduces sound by 39 dB (Dn,e,w).
- 6,300mm² (63cm²) equivalent area.
- Terracotta, buff/sand, white, grey, blue/black, black, brown.
- HETAS approved.



TALCWL – Rytons 9x6 Cowled Acoustic AirLiner Set with Flush Louvre Ventilator



Acoustic

- Cowled ventilation set for the provision of combustion air.
- Reduces sound by 42 dB (Dn,e,w).
- 5,500mm² (55cm²) equivalent area.
- Terracotta, buff/sand, white.
- HETAS approved.



Rytons Ventilation Sets '9x9'

- '9x9' through-wall AirLiner® sets for the provision of combustion air to stoves and fires.
- Telescopic liner extends from 250mm-404mm L including air brick.
- Internal baffles reduce transmission of light and draughts.

TCL20 - Rytons 9x9 Ventilation Set with Louvre Ventilator



- Ventilation set for the provision of combustion air.
- 26,500mm² (265cm²) equivalent area.
- Terracotta, buff/sand, white, grey, blue/black, black, brown.
- HETAS approved.



TCL20CWL - Rytons 9x9 Cowled Ventilation Set with Louvre Ventilator



- Cowled ventilation set for the provision of combustion air.
- 24,000mm² (240cm²) equivalent area.
- Terracotta, buff/sand, white.
- HETAS approved.



TAL9SET - Rytons 9x9 Acoustic AirLiner Set with Louvre Ventilator



Acoustic



- Ventilation set for the provision of combustion air.
- Reduces sound by 38 dB (Dn,e,w).
- 13,100mm² (131cm²) equivalent area.
- Terracotta, buff/sand, white, grey, blue/black, black, brown.
- HETAS approved.



TAL9CWL - Rytons 9x9 Cowled Acoustic AirLiner Set with Louvre Ventilator



Acoustic



- Cowled ventilation set for the provision of combustion air.
- Reduces sound by 40 dB (Dn,e,w).
- 12,200mm² (122cm²) equivalent area.
- Terracotta, buff/sand, white.
- HETAS approved.



Rytons Direct Ventilation Kits

- Direct ventilation kits for the provision of combustion air to stoves fitted with an attachment for an external air supply.
- Note: Direct ventilation is not suitable for all stoves. Always refer to the stove manufacturer's instructions regarding venting requirements.

DVKIT100 - Rytons 100mm Direct Ventilation Kit with 6x6 Louvre Grille



- Direct ventilation kit for stoves with 100mm diameter outlets.
- Terracotta, buff/sand, white, black, brown grille.
- Kit contains: Rytons 6x6 Louvre Ventilator, Backplate with 97mm Dia. Spigot, 102mm Dia. x 1.5m L Semi-rigid Aluminium RytHose, x2 Jubilee Clips.

DVKIT100MG - Rytons 100mm Direct Ventilation Kit with Stainless Steel Meshed Grille



- Direct ventilation kit for stoves with 100mm diameter outlets.
- Durable and stylish stainless steel grille.
- Kit contains: Rytons Stainless Steel Cowled Meshed Grille, 102mm Dia. x 1.5m L Semi-rigid Aluminium RytHose, x2 Jubilee Clips.

DVKIT125 - Rytons 125mm Direct Ventilation Kit with 6x6 Louvre Grille



- Direct ventilation kit for stoves with 125mm diameter outlets.
- Terracotta, buff/sand, white, black, brown grille.
- Kit contains: Rytons 6x6 Louvre Ventilator, Backplate with 122mm Dia. Spigot, 127mm Dia. x 1.5m L Semi-rigid Aluminium RytHose, x2 Jubilee Clips.

DVKIT125MG - Rytons 125mm Direct Ventilation Kit with Stainless Steel Meshed Grille



- Direct ventilation kit for stoves with 125mm diameter outlets.
- Durable and stylish stainless steel grille.
- Kit contains: Rytons Stainless Steel Cowled Meshed Grille, 102mm Dia. x 1.5m L Semi-rigid Aluminium RytHose, x2 Jubilee Clips.

Bespoke venting kits may be ordered with any size ducting from 63mm - 550mm diameter.
3m long ducting also available in selected sizes.

Rytons Floor Ventilators

- Room ventilator utilising air from a ventilated sub-floor void.

FV10BRASS - Rytons Floor Ventilator with Brass Louvre



- Floor vent with mirror polished solid brass louvre grille for a stylish appearance.
- 11,000mm² (110cm²) free area.
- Inverted louvres provide a neat flush finish.
- Fixing screws included.

FV10MSS - Rytons Floor Ventilator with Mirror Stainless Steel Louvre



- Floor vent with mirror stainless steel louvre grille for a stylish appearance.
- 11,000mm² (110cm²) free area.
- Inverted louvres provide a neat flush finish.
- Fixing screws included.

Ryttons Intumescent RytBlocks

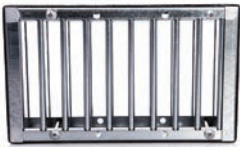
- Gives 3 hours protection preventing the passage of smoke and gases.
- In the event of a fire slats fuse together and seal within 2 minutes.
- Temperature increase insulated for 22 minutes.

TL8FIRE - Ryttons 9x3 Intumescent RytBlock



- Heavy duty intumescent grille for walls and ducts.
- 5,330mm² (53.3cm²) free area
- 206mm L x 58mm H x 44mm D.
- Compatible with Ryttons 9x3 AirLiner cavity liners.

TL18FIRE - Ryttons 9x6 Intumescent RytBlock



- Heavy duty intumescent grille for walls and ducts.
- 13,390mm² (133.9cm²) free area.
- 206mm L x 124mm H x 44mm D.
- Compatible with Ryttons 9x6 AirLiner cavity liners.

TL20FIRE - Ryttons 9x9 Intumescent RytBlock



- Heavy duty intumescent grille for walls, ducts and doors.
- 22,520mm² (225.2cm²) free area.
- 192mm L x 207mm H x 43mm D.
- Compatible with Ryttons 9x9 AirLiner cavity liners.

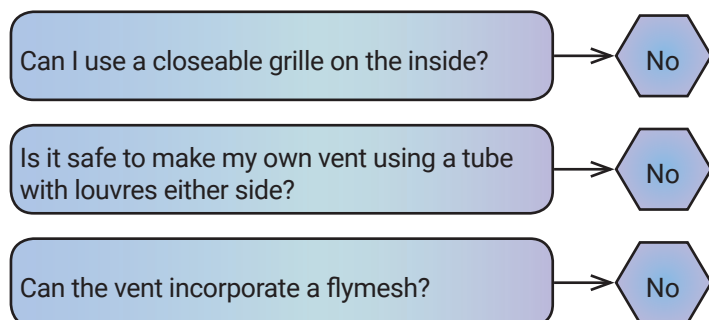
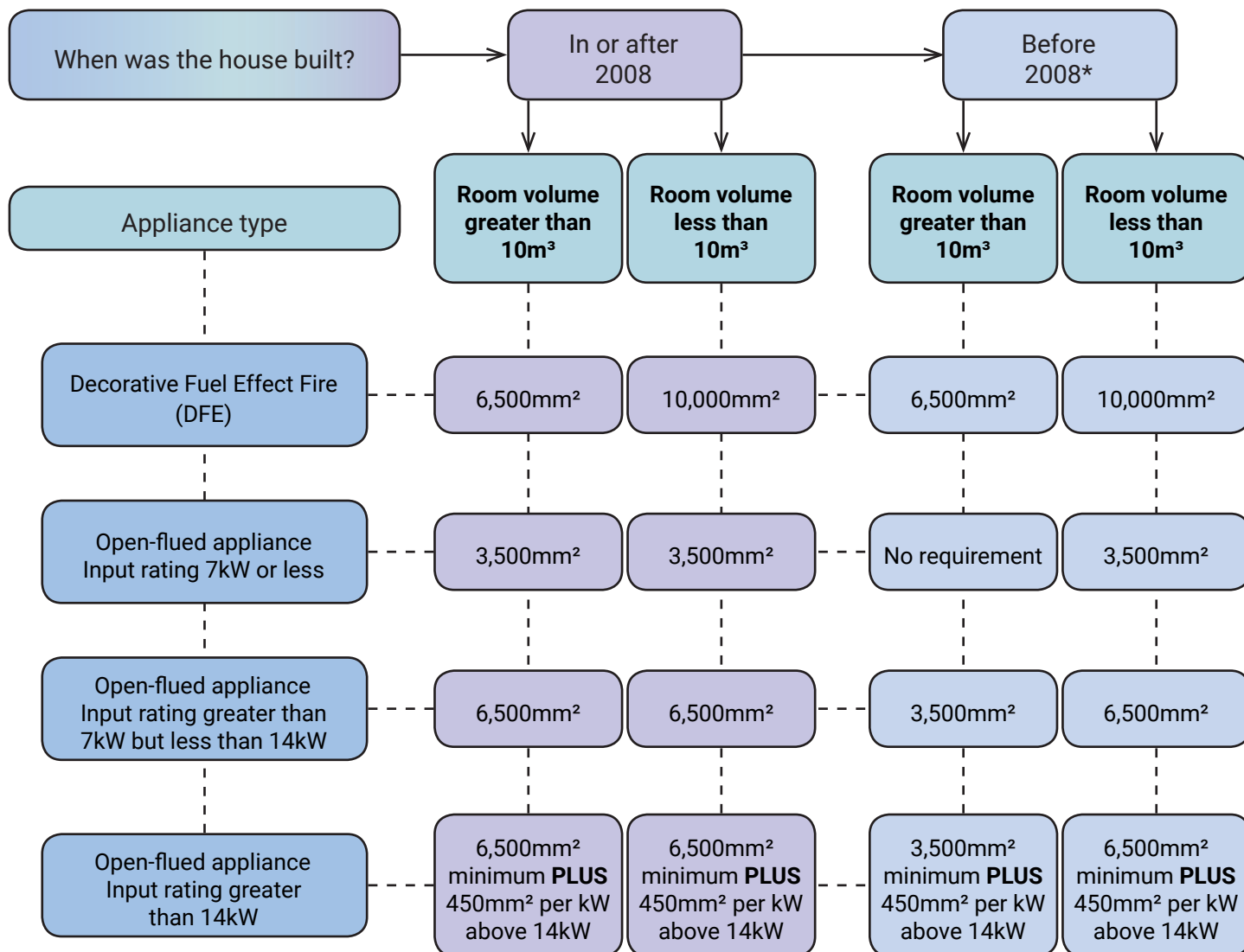
ACFIRE125 - Ryttons 125mm AirCore® Intumescent RytBlock



- Heavy duty intumescent grille for walls and ducts.
- 5,150mm² (51.5cm²) free area.
- 118mm Dia. x 43mm D.
- Compatible with Ryttons 125mm Dia. AirCore range.

A step by step guide to calculating the ventilation requirements of gas appliances in Ireland

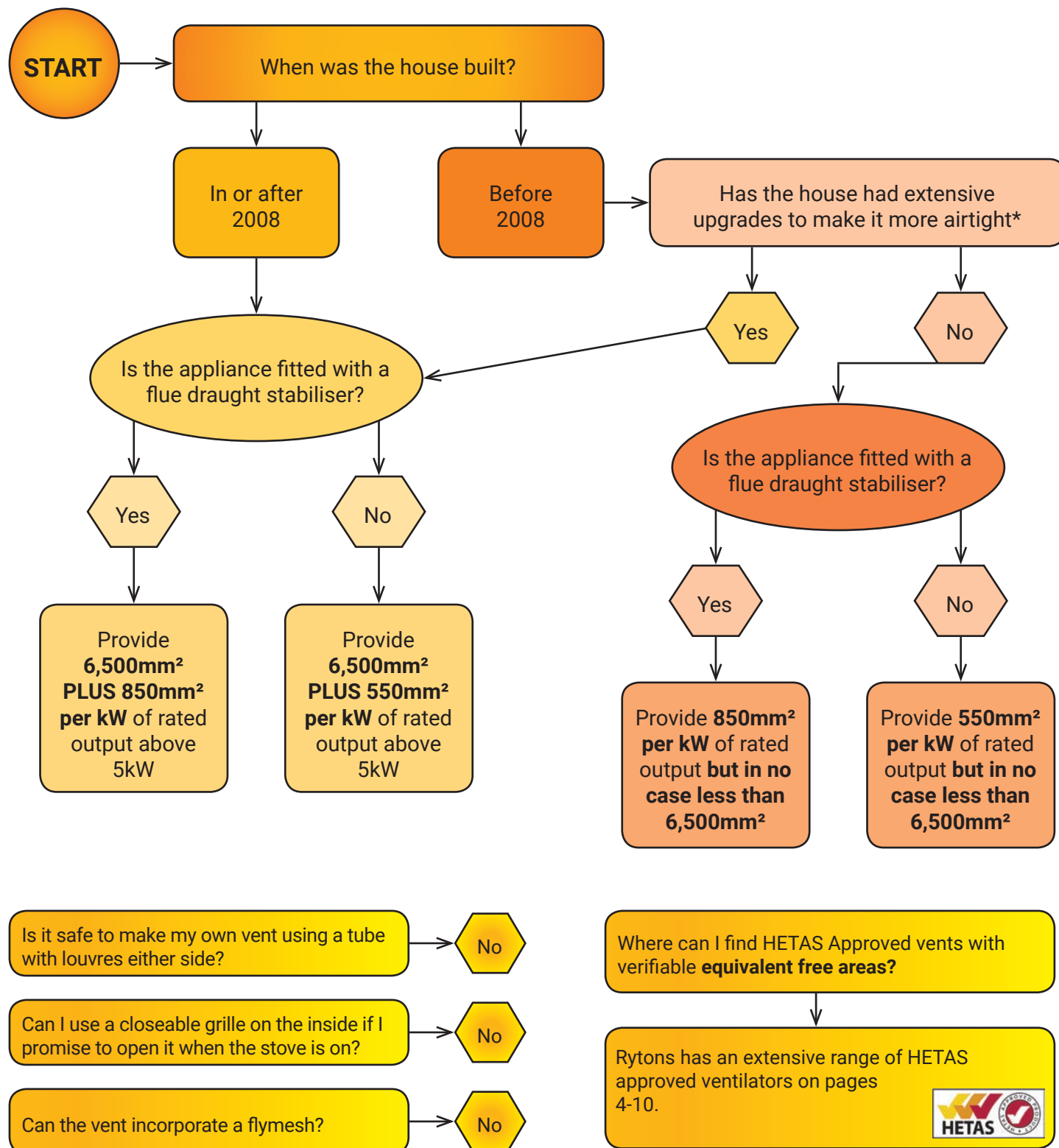
Extracts from the Building Regulations Technical Guidance Document Part J, table 4.
Information applies to fixed gas burning appliances with a rated input up to 70 kW.



* Refer to Appendix B of Technical Guidance Document Part J for measures that constitute significantly improving airtightness.

A step by step guide to calculating the ventilation requirements of solid fuel appliances in Ireland

Extracts from the Building Regulations Technical Guidance Document Part J.
Information applies only to stoves, cookers and boilers burning solid fuel (including solid biofuel) with a rated output up to 50kW.



* Refer to Appendix B of Technical Guidance Document Part J for measures that constitute significantly improving airtightness.

Products & Services

As a UK ventilation manufacturer since 1972, we use all our expertise and experience to bring you outstanding product ranges and a service you can rely on.

To order call **00441536 511874** or email **admin@rytons.com**.

Orders to the Republic of Ireland are normally delivered in 2-3 working days.

